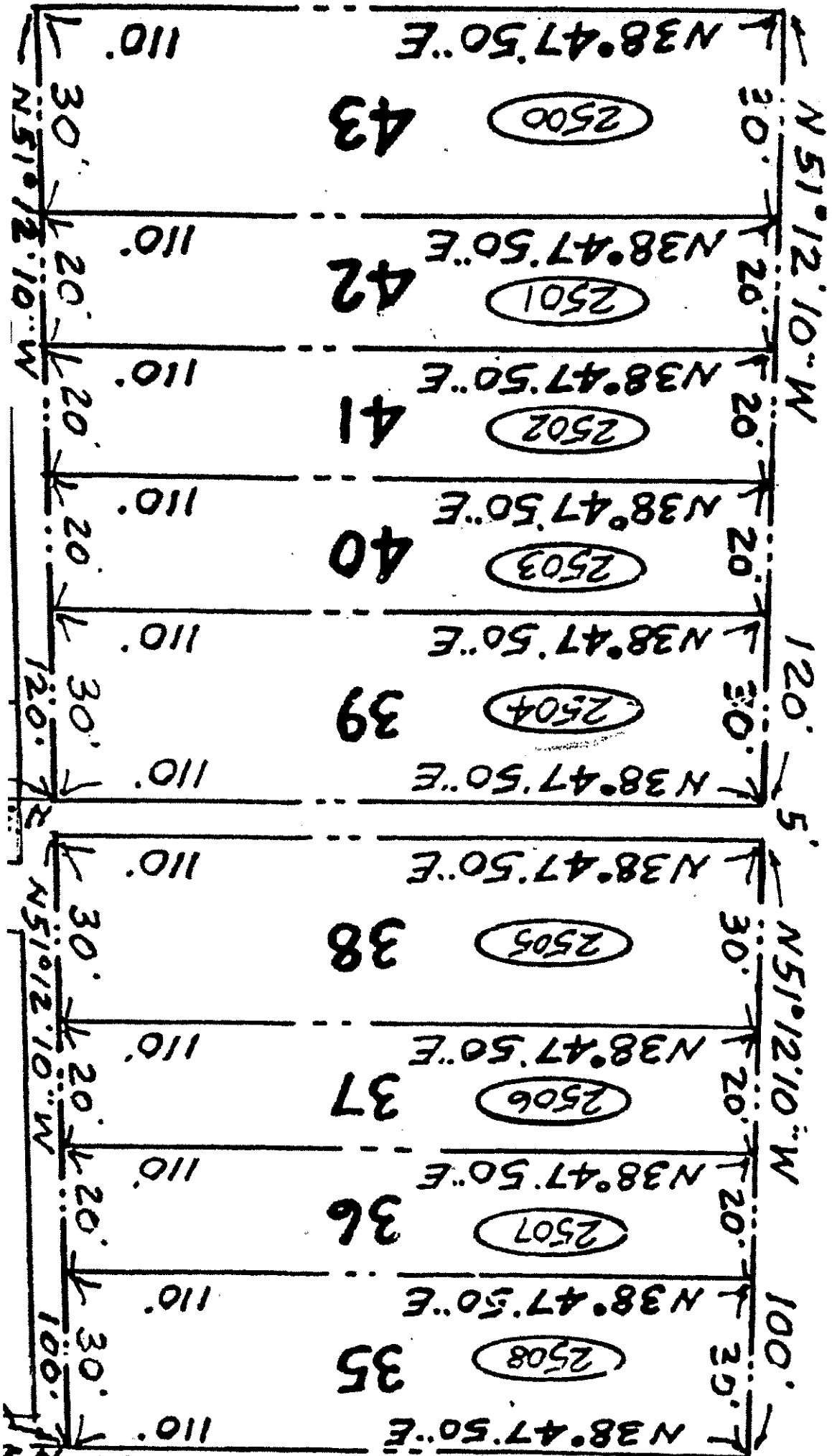


PROPOSED RIGHT OF WAY IS OFFERED FOR DEDICATION TO THE APPROPRIATE GOVERNMENTAL BODY

ARROWHEAD TRAIL
CHEROKEE
IROQUOIS WAY
POND
GREEN
CIRCLE
NANTUCKET
MANTUCKET CENTER FOR LITIGATION
NOTE SEE THE

2500-2508 NAVASO



8200-8204 NAVASO

N 47° 08' E

30

20

20

20

120

80°

80°

80°

80°

80°

49

N 42° 52' W

(2204)

50

N 42° 52' W

(2203)

51

N 42° 52' W

(2202)

52

N 42° 52' W

(2201)

53

N 42° 52' W

(2200)

30

20

20

20

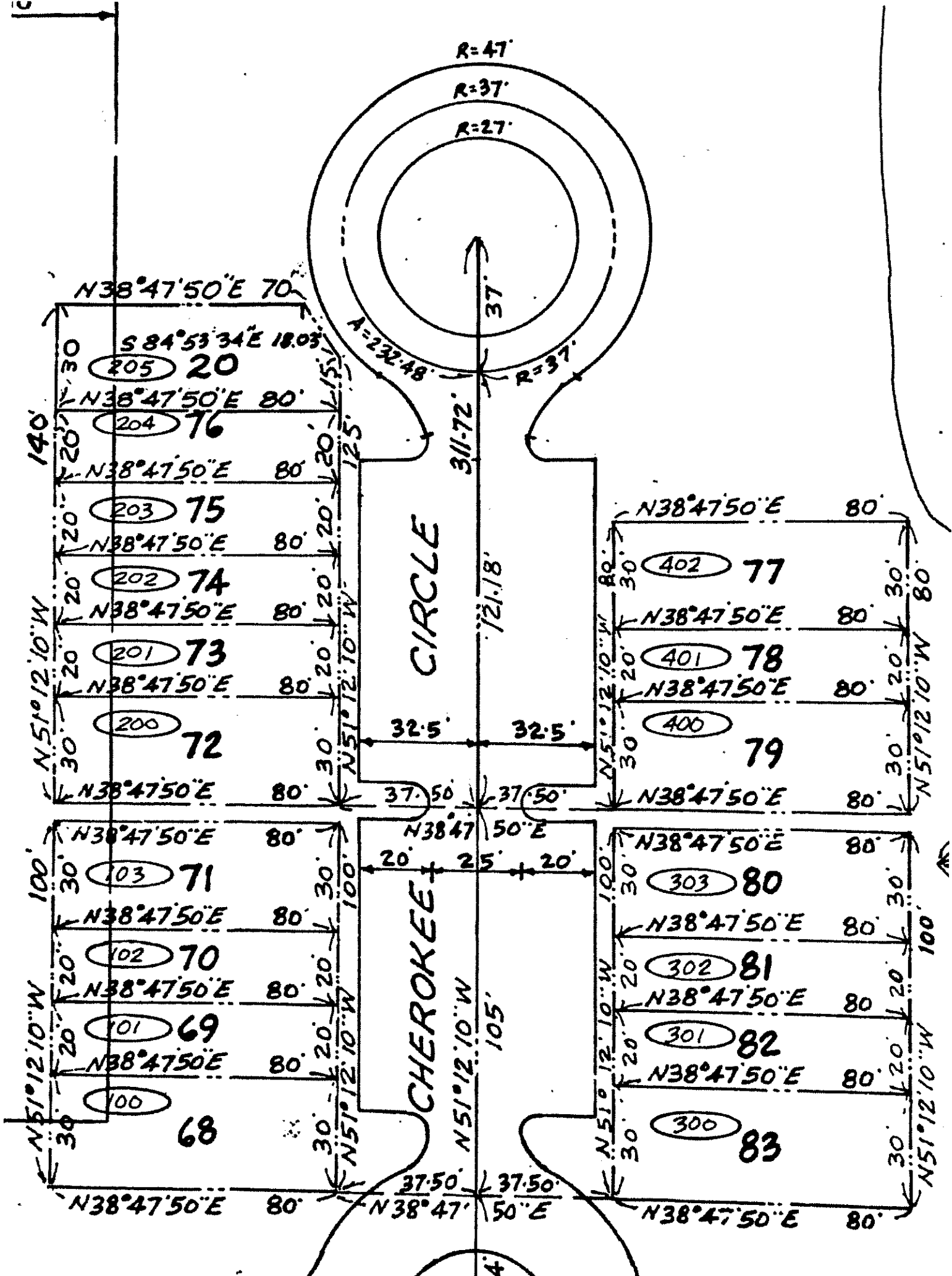
30

N 47° 08' E

120

N 42° 52' W

80°



R=47'
R=37'
R=27'

A=232.48'

CIRCLE

CHEROKEE

N38°47'50"E 70'
S 84°53'34"E 18.03'
N38°47'50"E 80'
N38°47'50"E 80'
N38°47'50"E 80'
N38°47'50"E 80'
N38°47'50"E 80'
N38°47'50"E 80'

N38°47'50"E 80'
N38°47'50"E 80'
N38°47'50"E 80'
N38°47'50"E 80'
N38°47'50"E 80'

N38°47'50"E 80'
N38°47'50"E 80'
N38°47'50"E 80'
N38°47'50"E 80'
N38°47'50"E 80'

N38°47'50"E 80'
N38°47'50"E 80'
N38°47'50"E 80'
N38°47'50"E 80'
N38°47'50"E 80'

N51°12'10"W

N51°12'10"W

N51°12'10"W

N51°12'10"W

N51°12'10"W

N51°12'10"W

37'

311.72'

121.18'

32.5'

32.5'

37.50'

37.50'

20'

25'

20'

105'

37.50'

37.50'

4

205 20

204 76

203 75

202 74

201 73

200 72

103 71

102 70

101 69

100 68

402 77

401 78

400 79

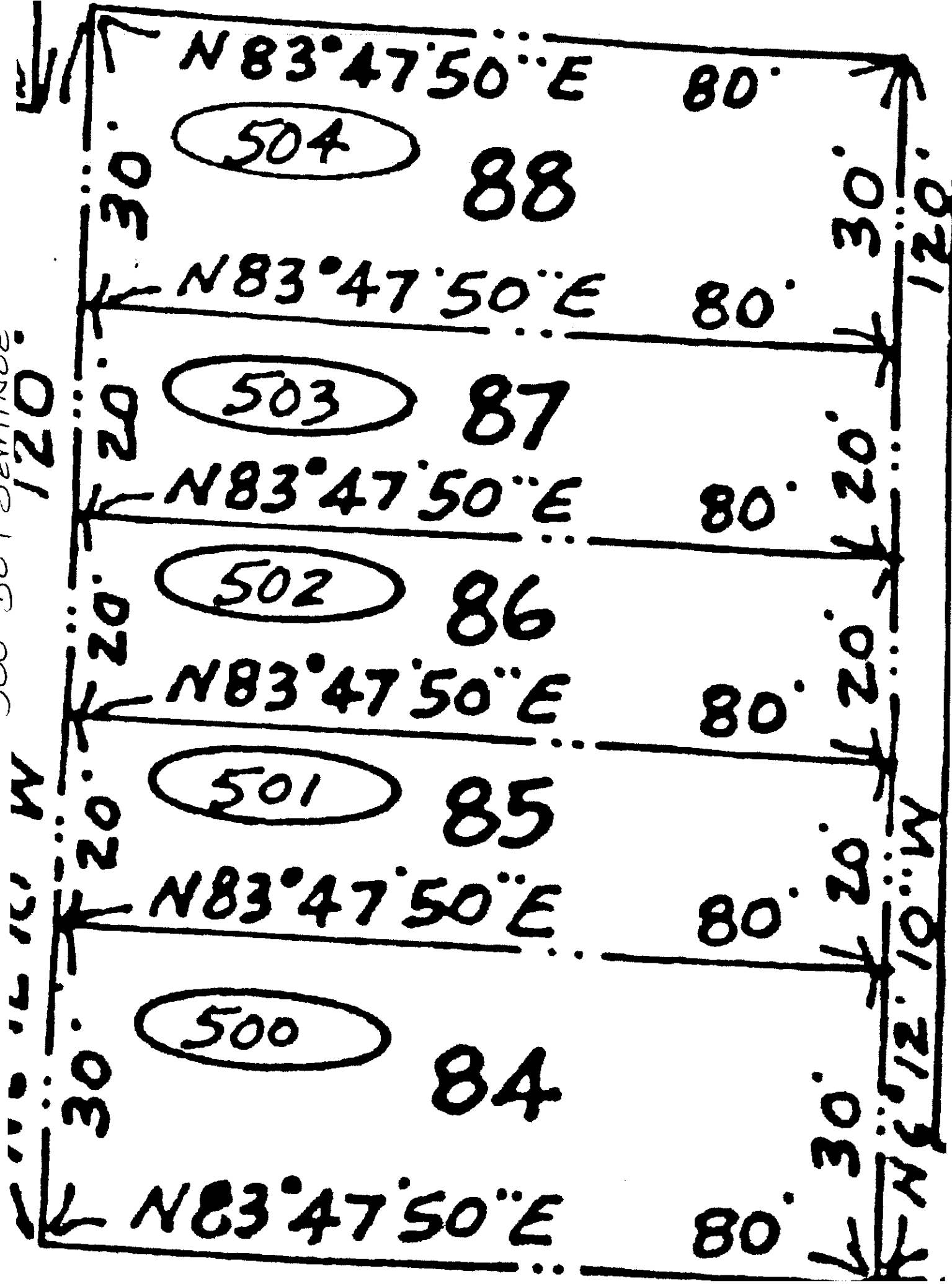
303 80

302 81

301 82

300 83

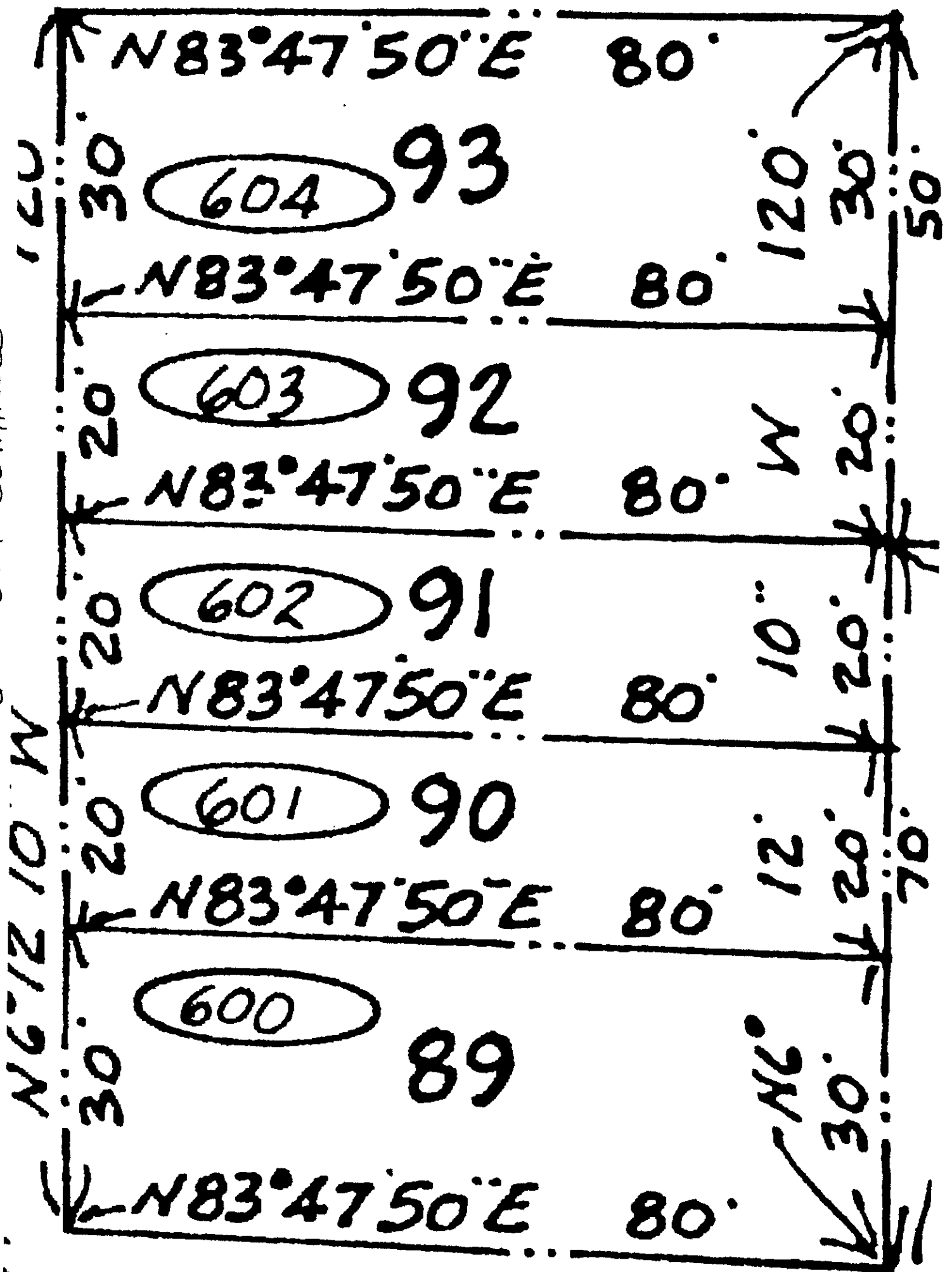
500-504 SEMINOLE



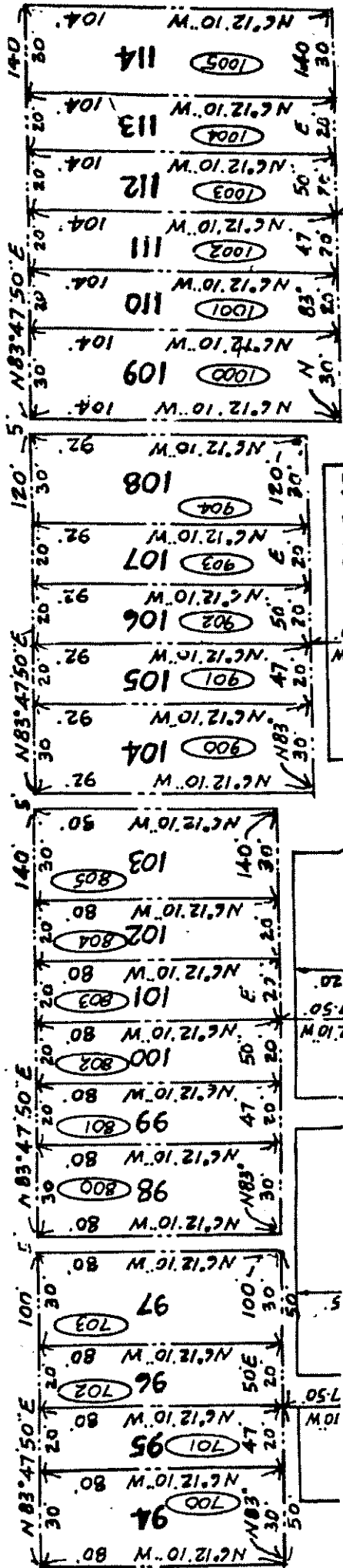
W

W
10'
12'
10'
W

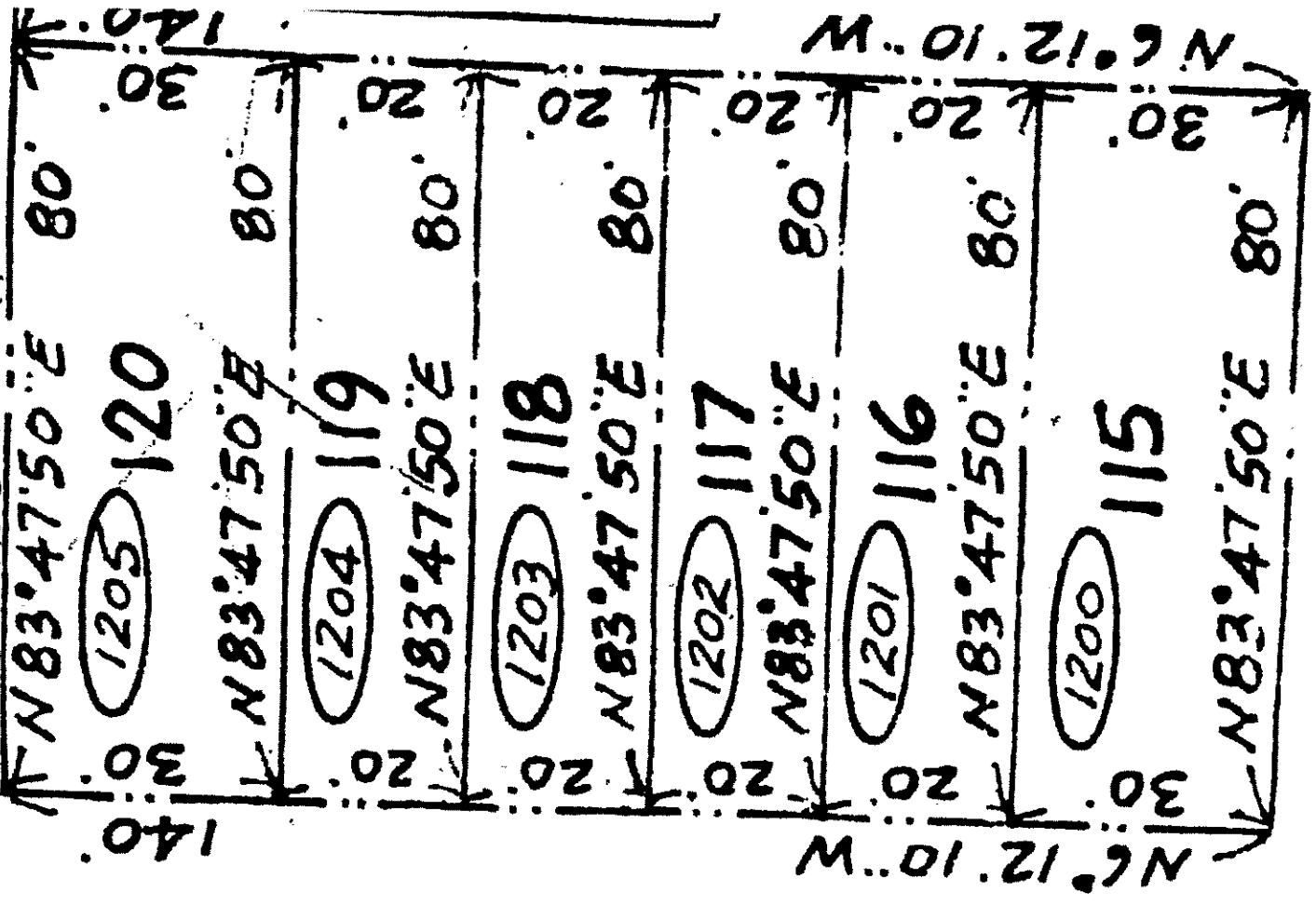
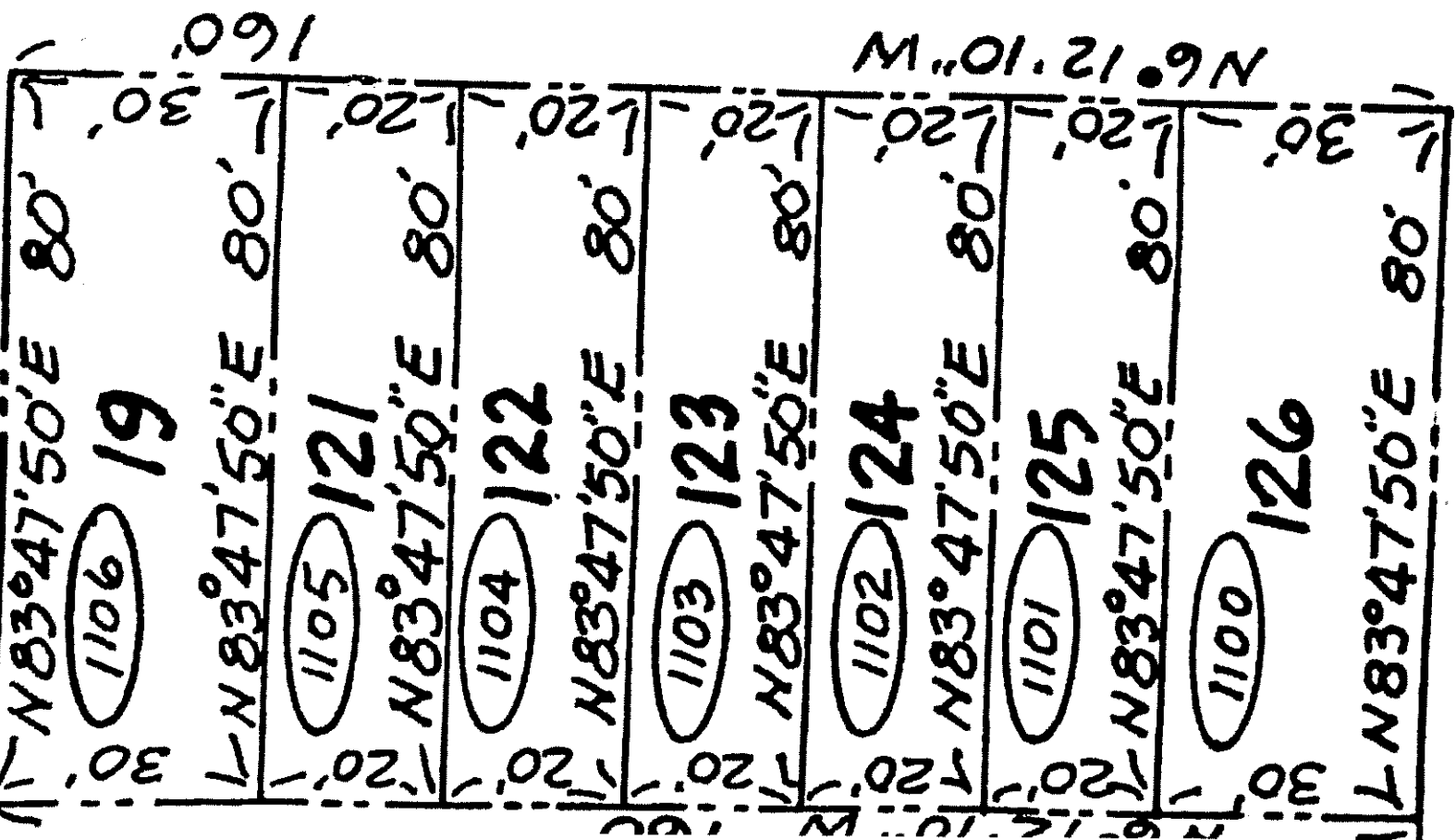
600-604 SEMINOLE



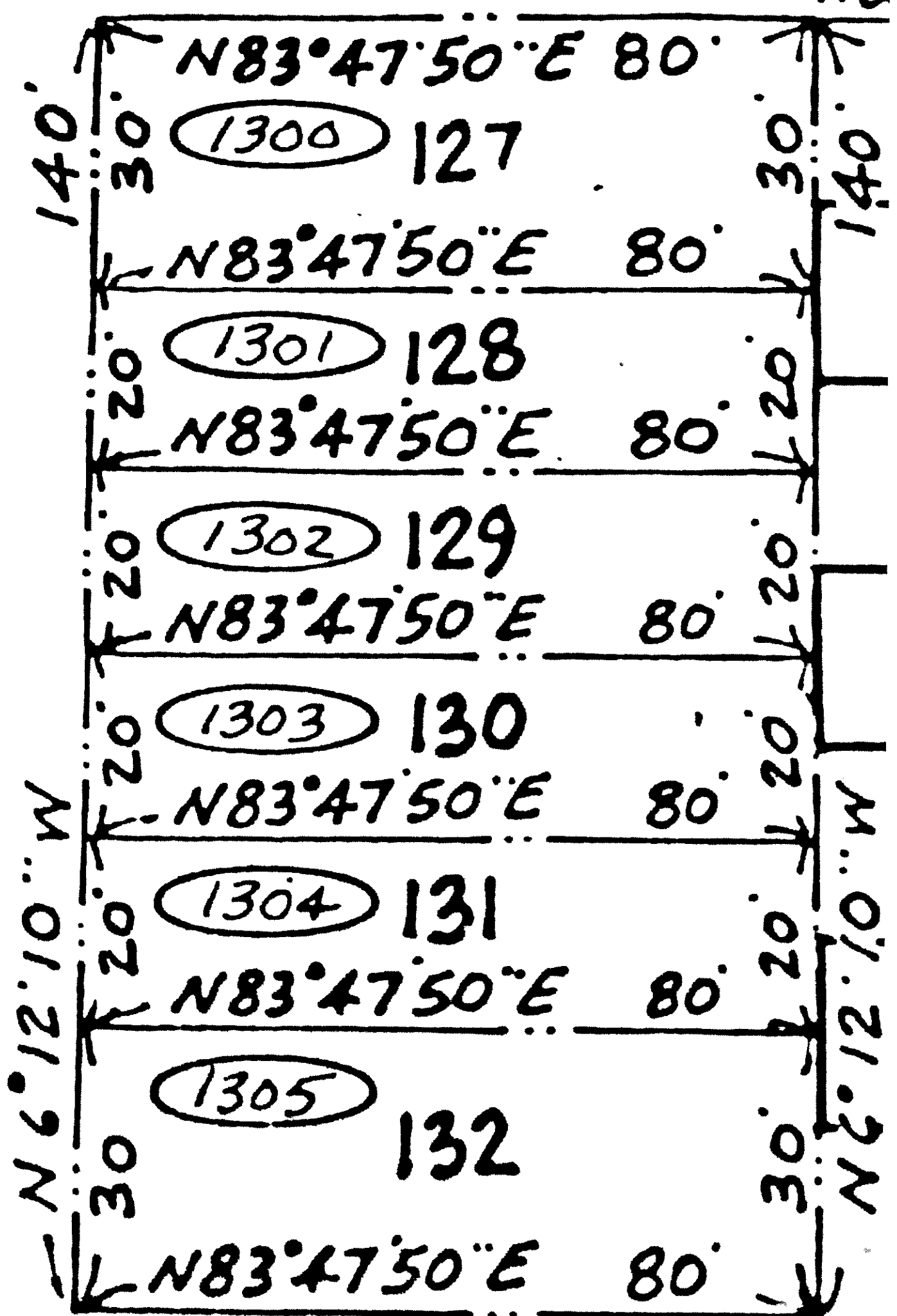
700-1005 SEMINOLE



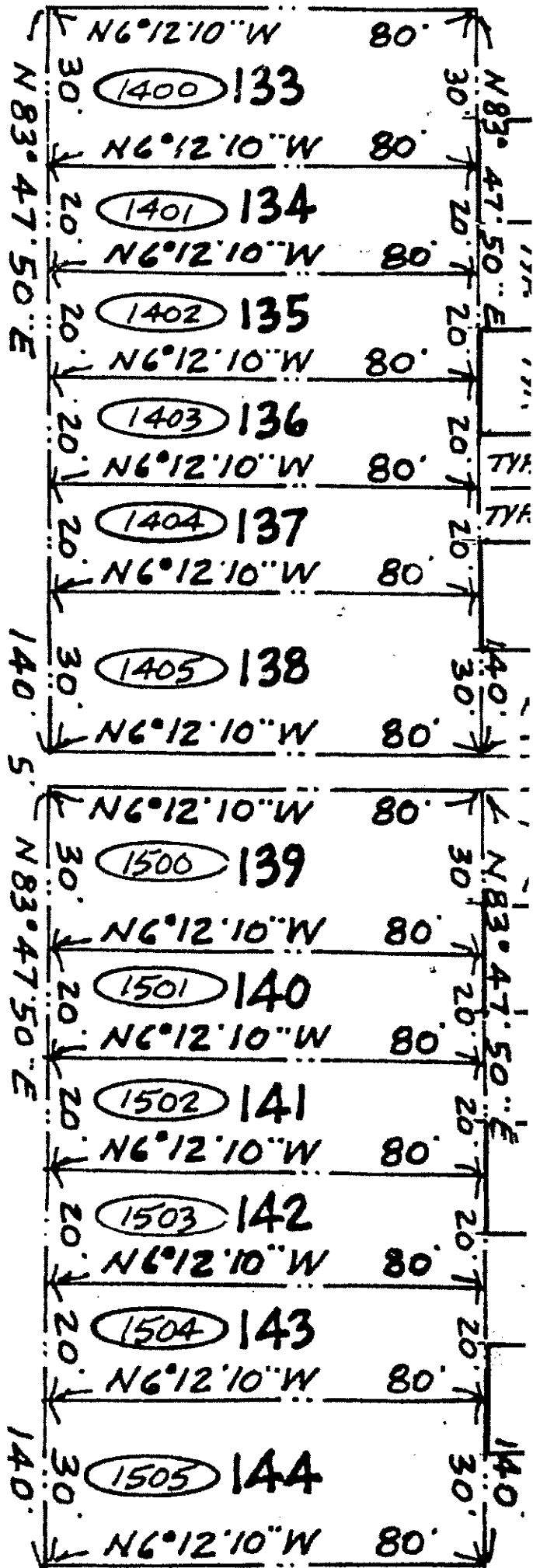
1100-1106 SEMINOLE
AND ALCONQUAN



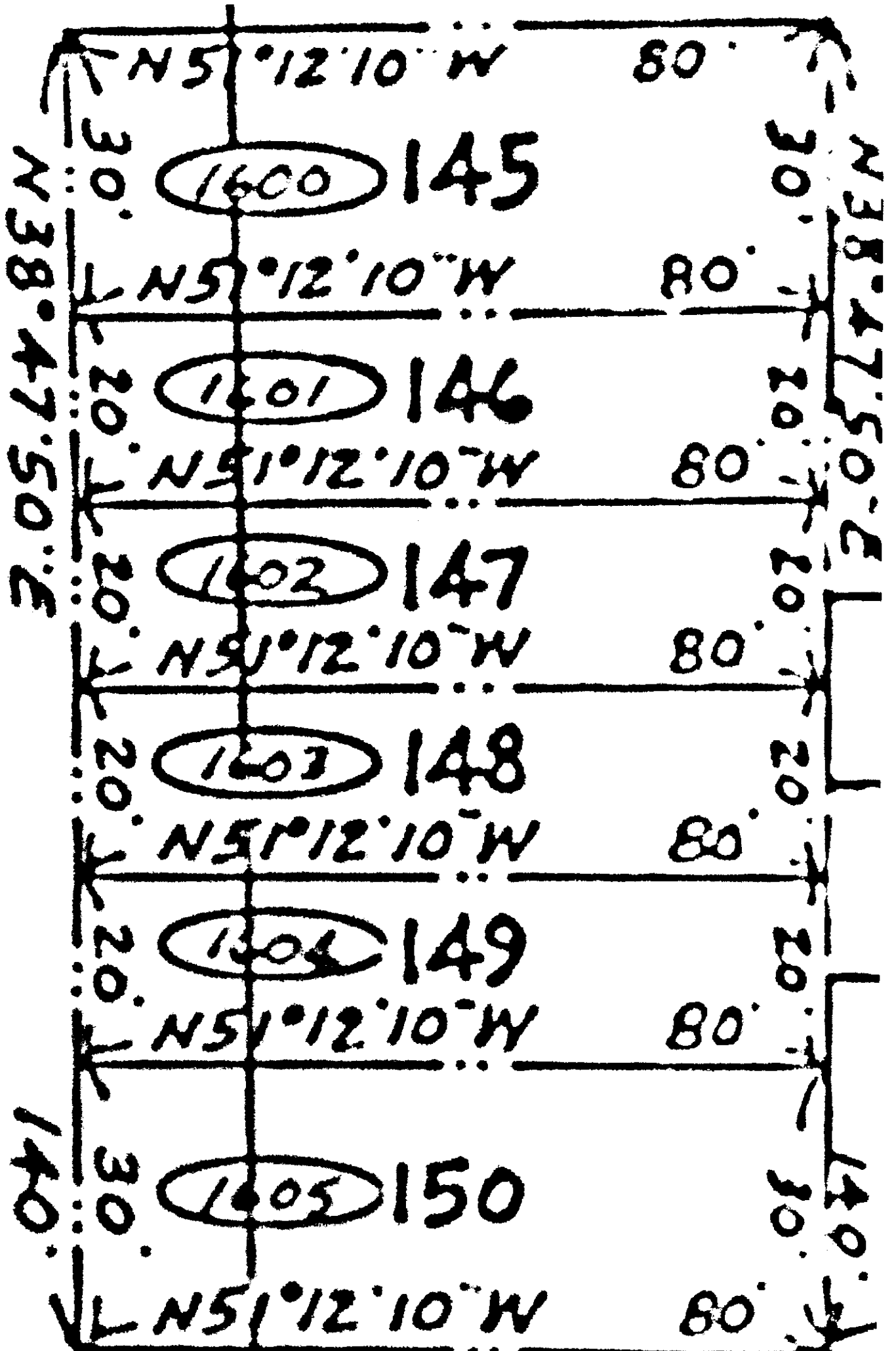
1300-1305 SENECA



1400-1505 SENECA



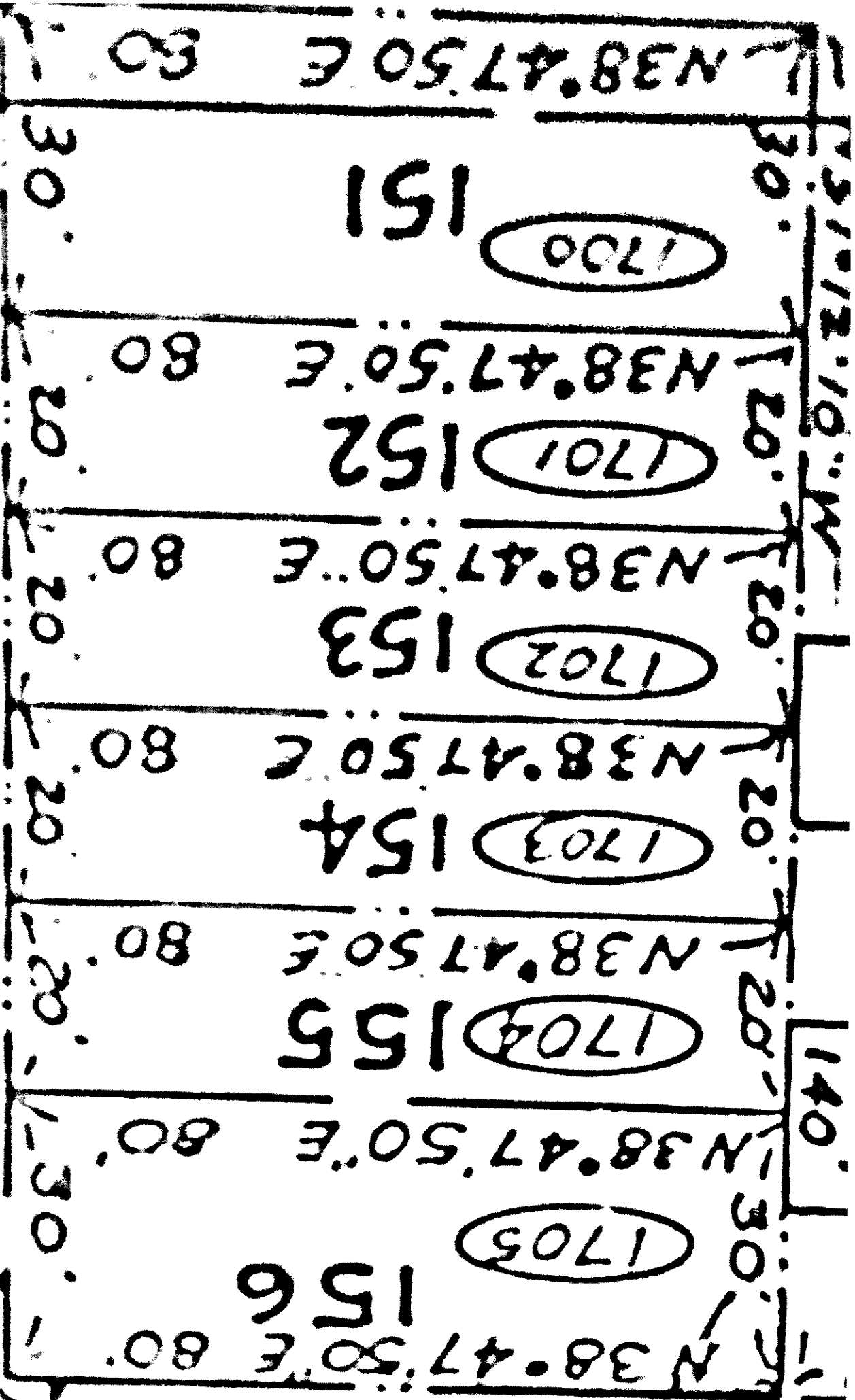
1600-1605 SENECA



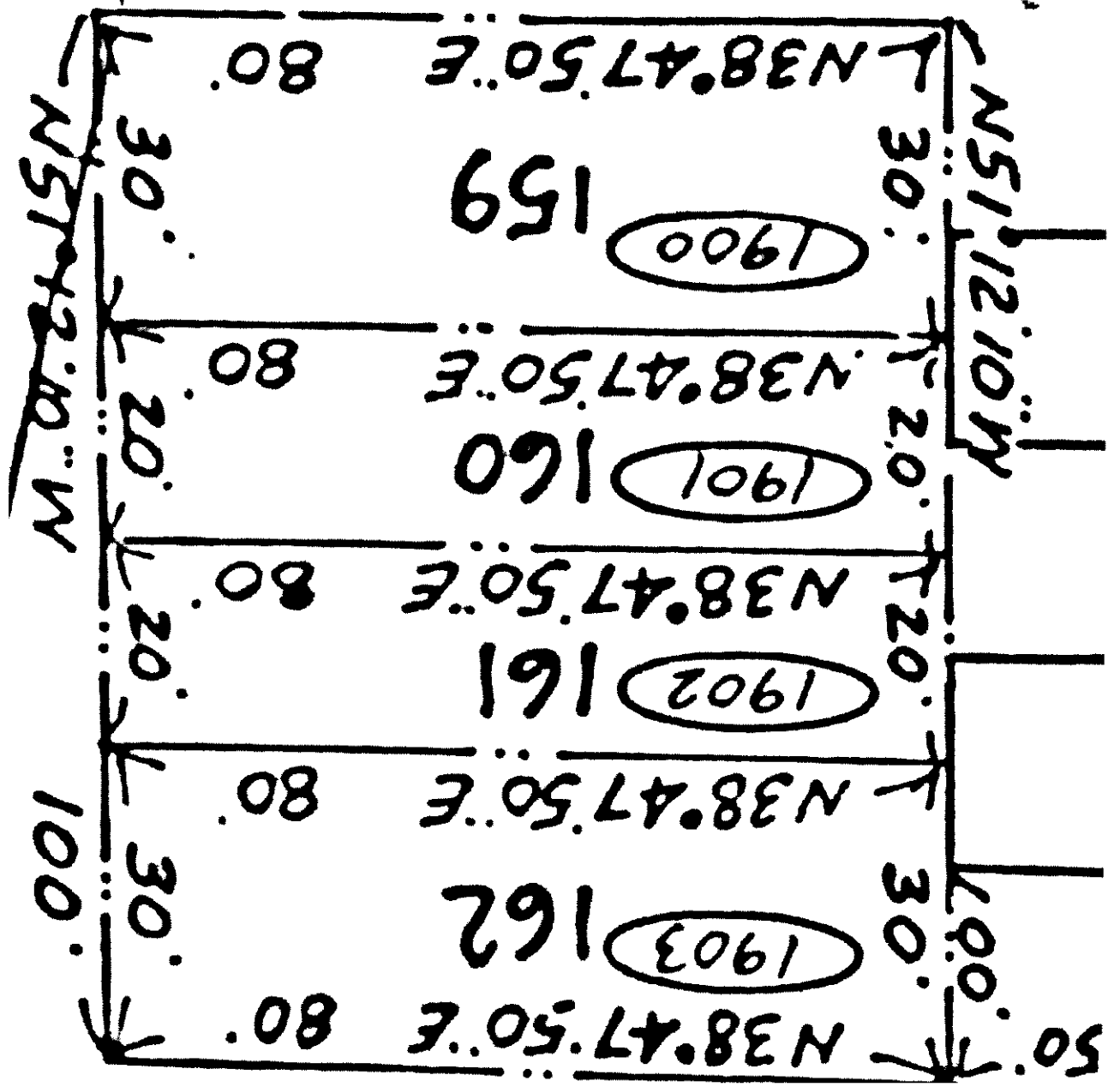
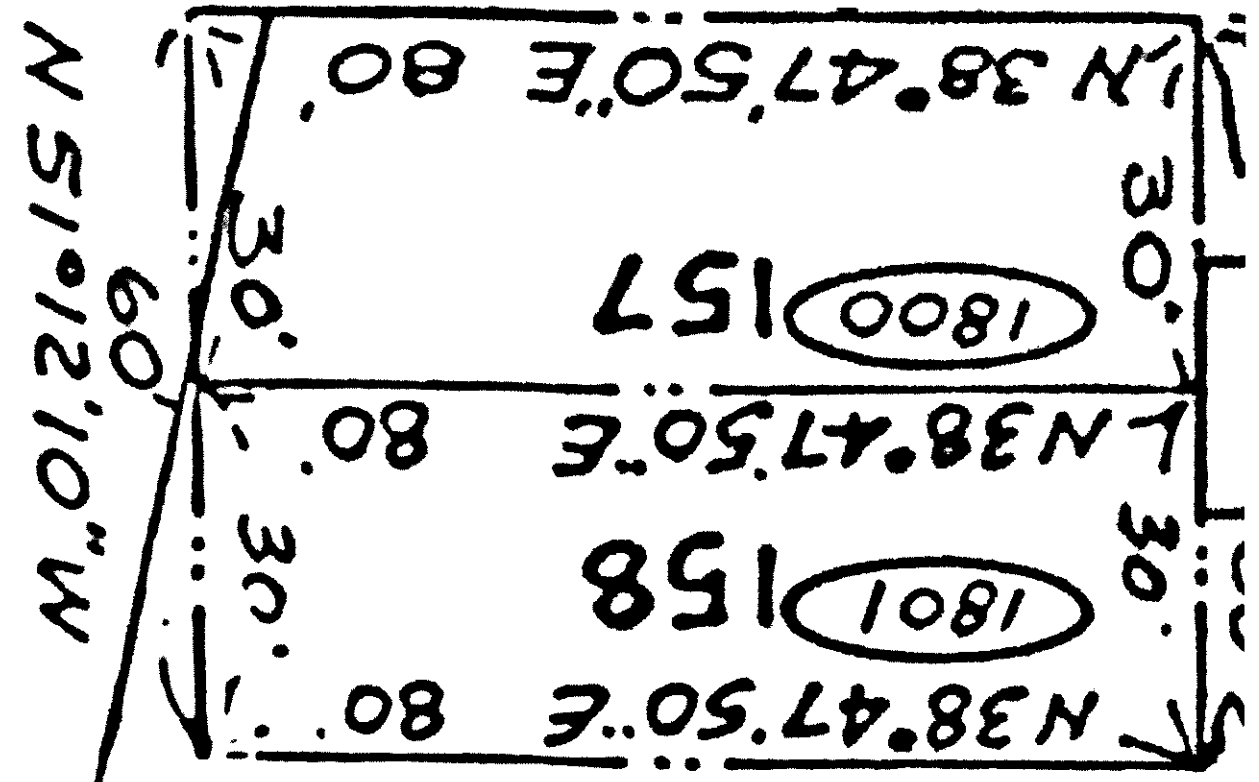
1700-1705 CHIPPENWA

A 51.12.10 W

140



1800-1903 CHIPPEWA



2000-2005 CHIPPEWA

